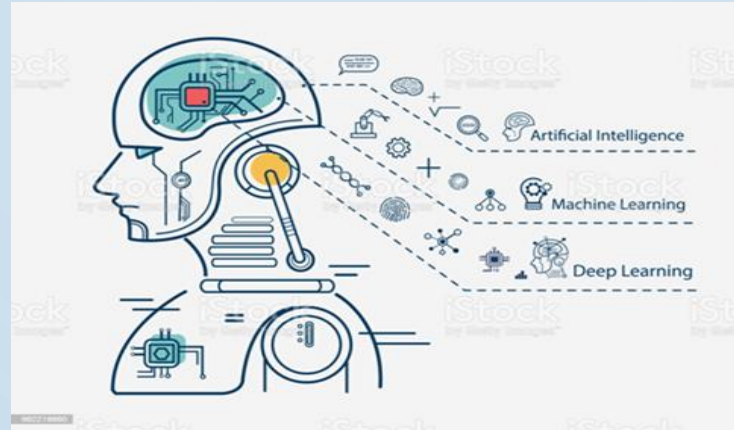




INDIAN WOMEN SCIENTISTS' ASSOCIATION

www.iwsa.net

6th Talk under IWSA's "Science and Our Life" Lecture series



Artificial Intelligence Models in Healthcare

by

Prof. Anitha S. Pillai

- School of Computing Sciences, Hindustan Institute of technology and science
- Founder-XploRDatos Research Labs
- Co-editor of the book- "Virtual & Augmented Reality in education, art & museums"



Application of Artificial Intelligence in neurological disorders: An Overview

by

Prof. Bindu Menon

- HOD & Senior Consultant Neurologist, Apollo Hospitals
- Convenor IWSA Nellore branch
- Research Committee member, World Stroke Organisation
- Founder- Dr. BINDU MENON FOUNDATION
- Neurology on wheels – mobile van
- "EPILEPSY HELP", "STROKE HELP" - Apps

17th October 2020 at 6:30 PM

Join – <https://meet.google.com/ozx-dret-rjx>

Artificial Intelligence Models in Health Care

Speaker: Prof. Anitha S. Pillai

Artificial intelligence (AI), Machine Learning (ML) and Deep Learning (DL) models are used to support Neurologist in treating Neurological disorders. These models are trained using a Dataset and the model learns to perform tasks like detection of a disorder, Predict the likelihood of a disease or propose rehabilitation measures. AI can learn features from large volume of healthcare data and then use these insights to assist Neurologist in treatment design or in assessing the risk. AI can be trained to do jobs, such as analyzing tests, X-Rays, CT scans or data entry and they can also help in reducing diagnostic and therapeutic errors.

Application of Artificial Intelligence in Neurological Disorders - An Overview

Speaker : Prof. Bindu Menon

There is a great impact of Artificial intelligence (AI) in detection and prediction of diseases in the healthcare sector and neurology is no exception to this growing trend. AI can offer many benefits to the Neurologist, both in neurological research, as well as in diagnosis and therapeutic interventions. How can a Neurologist make use of AI and which are the neurological disorders which can be detected and predicted using AI and how can AI-based algorithms and models help neurologists and their patients? In this talk the various areas of neurology where AI is currently playing a role in improving healthcare will be highlighted.